

**Governing for Greatness Series**

# Want a Safe School? Start with an Authentic School Climate



**Wendy Larvick | Raihan Akther, Ed.S. | Chris White, Ed.D.**



NATIONAL CHARTER SCHOOLS  
**INSTITUTE**

**BOARD**  
NETWORK



# A Community Designed to Elevate Your Boards

[www.CharterInstitute.org/Board-Network](http://www.CharterInstitute.org/Board-Network)



# A Community Built for Boards Enjoy the Advancement!



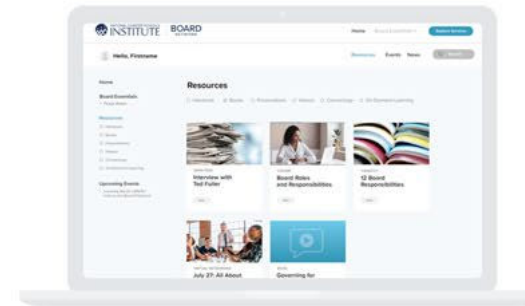
## On-Demand Learning

Online trainings are released each month with timely board related topics that will earn you credentials.



## Networking & Events

Connect with your peers and acquire best practices from across the nation with monthly virtual networking events.



## Tools & Resources

Access a resource library comprised of a broad range of tools and information to advance your board.







## **Raihan Akther, Ed.S.**

*Principal, Bridge Academy West*

[AktherR@gee-edu.com](mailto:AktherR@gee-edu.com)



**BOARD**  
NETWORK



## **Chris White, Ed.D.**

*Director of Assessment and Evaluation*

*Central Michigan University Center for Charter Schools*

[CWhite@thecenterforcharterschools.org](mailto:CWhite@thecenterforcharterschools.org)



THE GOVERNOR JOHN ENGLER  
**CENTER FOR  
CHARTER SCHOOLS**  
CENTRAL MICHIGAN UNIVERSITY



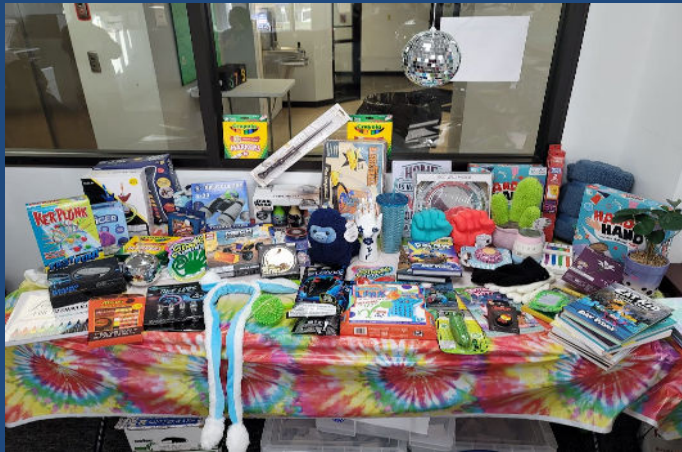
**BOARD  
NETWORK**

# Agenda

- Introduction & Definitions
- The Learning Environment/School Climate
- An Environment for Achievement
- Why is this important for teachers?
- Emotional Safety



With every interaction in a school, we are either building community or destroying it.





# Confusing Terms

- Learning Environment
- School Climate
- School Culture
- Emotional Safety/Belonging
- Social Emotional Learning



The learning environment, also known as the measure of school climate, can be experienced by the five senses, and yet we sometimes ignore it like the air we breath – we ignore it until it becomes noticeably offensive.



EDSCLS



## ED School Climate Surveys (EDSCLS)

### Engagement

Cultural and linguistic  
competence

Relationship

School participation

### Safety

Emotional safety

Physical safety

Bullying/cyberbullying

Substance abuse

Emergency  
readiness/management

### Environment

Physical environment

Instructional  
environment

Physical health

Mental health

Discipline



# Emotional Safety

An experience in which one feels safe to express emotions, a sense of security, confident in taking risks, and feels challenged to try something new.

Our most primal superpower is human connection: sharing positive feeling with another human being. Human connection power is the glue that hold us together.



If a school is safe and relationships are fostered, only then can the environment be achievement oriented.

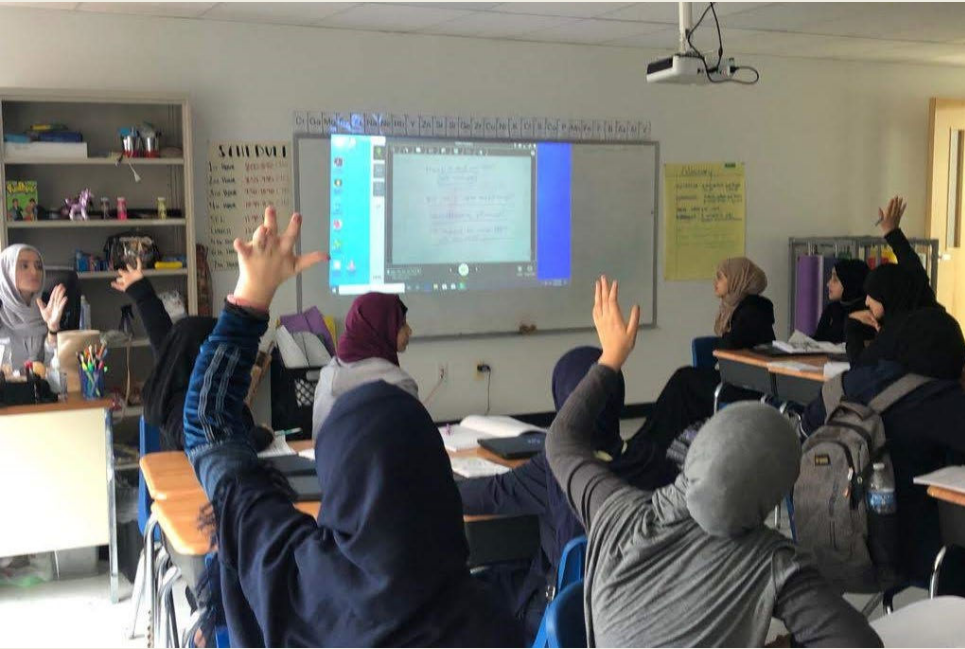
# Emotional Safety

- Feeling a sense of belonging.
- Able to be your authentic self.
- Comfortable discussing feelings, worries, frustrations.
- Inspiring and challenging environment.
- Efficacy, especially in dealing with social and emotional situations.
- Important for adults as well as students.

## Sense of Belonging: How do you know?

- Do you feel like you belong at your school?
- Is your school a place where you are encouraged to try hard and do your best?
- Does your school make all types of students feel welcomed and included?
- Do students and adults at your school treat people from all cultures, backgrounds, race/ethnicities, religions, abilities, etc. fairly?
- Are you given the same chance as others to do well in school?





Due to the social nature of the teaching profession teachers are more susceptible to their climate (environment) than other professions.

# Skills for a Positive Climate: Social Emotional Learning

**Self Awareness:** knowing strengths and limitations

**Self-Management/Persistence:** stay in control and persevere through challenge

**Social Awareness:** understanding and empathizing others; understanding different social situations

**Relationship Skills/Thinking Interdependently:** work with a team and resolve conflicts

**Responsible Decision-Making:** ethical and safe choices

## SEL: How do you know?

- Are you able to stay calm when things are going wrong for you?
- Are you able to control your emotions when you need to?
- Are you able to stay calm when people around you are angry?
- Do you respect other people's point of view, even if they disagree with you?
- Do you gather information and facts before forming an opinion about something?

# Resources





# Sources

*School Climate Change: How do I build a positive environment for learning?* (2014). Peter Dewitt & Sean Slade.

*The Motivation to Work.* (2010). Herzberg, Mausner, & Bloch-Snyderman.

*Organizational Climate and Culture: An Introduction to Theory, Research, and Practice.* (2014). Ehrhart, Schneider, & Macey.

*School Culture Recharged: Strategies to Energize Your Staff and Culture.* (2017). Gruenert & Whitaker.

*National Center on Safe and Supportive Learning Environments: ED School Climate Surveys.* <https://safesupportivelearning.ed.gov/edscls>

*Panorama Education.* <https://www.panoramaed.com/>

*Retention for a Change: Motivate, Inspire, and Energize Your School Culture.* (2021). Joseph Jones & Salome Thomas-EL.

*Organizational Climate.* (1968). R. Tagiuri.

*School Climate: Leading with Collective Efficacy.* (2018). Peter DeWitt.

*Teacher Burnout Turnaround.* (2021). Patricia Jennings.

*The Power of Habits of Mind to Increase Emotional Awareness* (2024). From ASCD Educational Leadership, March 2024.

# QUESTIONS

**Dr. Christopher White**

[cwhite@thecenterforcharters.org](mailto:cwhite@thecenterforcharters.org)

**Raihan Akther**

[aktherr@gee-edu.com](mailto:aktherr@gee-edu.com)

Question?

---

Answer

# Upcoming A-GAME Convenings

Learn more: [Nationalcharterschools.org/agame](https://Nationalcharterschools.org/agame)

Register at: [www.CharterInstitute.org/2024-AGAME-Convenings](https://www.CharterInstitute.org/2024-AGAME-Convenings)

**APR  
3**

## Virtual Convening (*Free*)

Meet with your peers online, Wednesday, April 3, 2024 at 1:00 pm EST.

**MAY  
2-3**

## In-Person Convening

Join your peers in Chicago, IL, from 12:00 pm, May 2 through 3:00 pm, May 3 (Thursday and Friday). NACSA will cover the registration cost for the first 50 NACSA member organizations.

**Registration Deadline: April 5**

Not Yet an A-GAME member? The A-GAME community is free to join. You can access valuable resources and tools!







NATIONAL CHARTER SCHOOLS  
**INSTITUTE**

**BOARD**  
NETWORK



# A Community Designed to Elevate Your Boards

[www.CharterInstitute.org/Board-Network](http://www.CharterInstitute.org/Board-Network)



# Join Us for Our Next Board Webinars

## Upcoming Topics...

**April**

Strategic Planning

**May**

Board Development

