



JANUARY 2025  
Virtual Convening

**ARE YOU**

**READY?!**

**LET'S GET OUR A-GAME ON!**





# **SUPPORTING STRUGGLING CHARTER SCHOOLS**

**Building a Stronger Ecosystem  
Through Asset Mapping and  
Collaborative Dialogue**



**Vashaunta Harris**

VP of Professional Networks  
National Charter Schools  
Institute



**Lisa Bergman**

Partner  
National Charter Schools  
Institute



**Jody Ernst**

Vice President  
Momentum Strategy &  
Research



**Aimee Evan**

Senior Research  
Associate  
WestEd





# Welcome Our Panelists



**Sarah Hackett**

Director

Wisconsin Resource Center for Charter Schools



**Tamara Shear**

Chief Program Officer

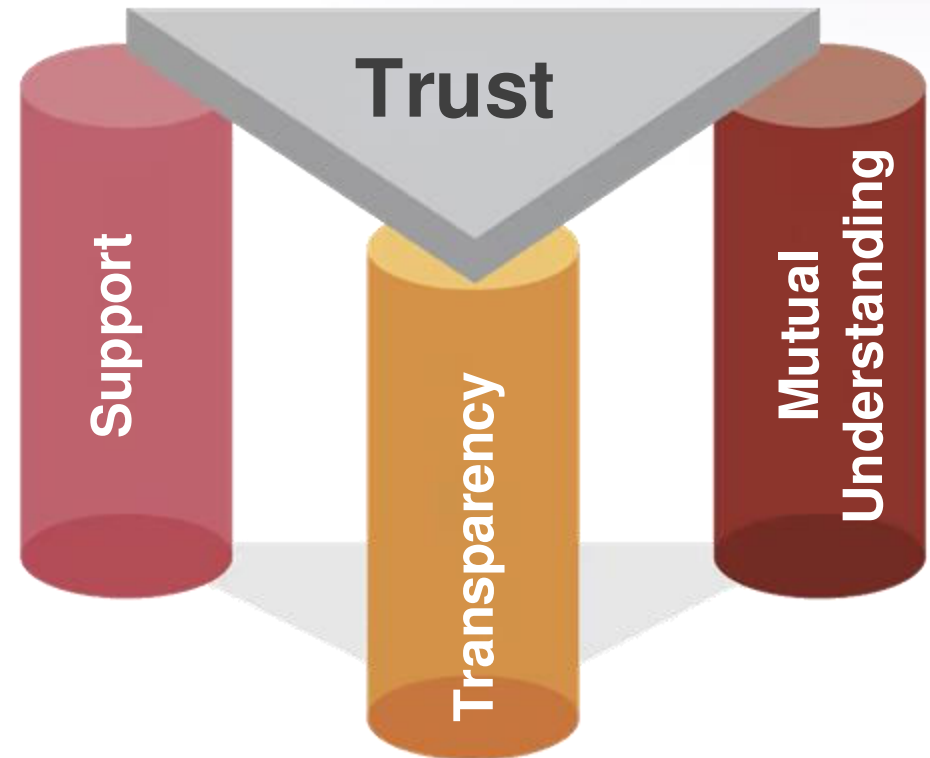
Opportunity 180





*Answer in the chat...*

When we partner with schools, how can we establish trust through transparency, support and mutual understanding?



# What is an Asset Map?

Asset mapping is systematic process for...

- identifying, cataloging, and mapping the assets of an ecosystem.
- assessing and mobilizing existing strengths  
*while simultaneously....*
- building (or strengthening) relationships among the various groups or organizations within an ecosystem.



# Types of Assets

Professional  
Learning and  
Coaching

Network Building  
and Peer  
Connections

Advocacy and  
Policy  
Intervention

Capacity  
Outsourcing or  
Task Sharing

Research and  
Data  
Management

Process  
Streamlining

Supplementing  
Financial, Human,  
or Intellectual  
Resources

# Example #1: Aligning Assets to Need

Step 1: Pick one IoD category.

IoD: Governance  
(Capacity)

Step 3: Who are our  
support providers?

Step 2: Why do we think  
schools struggle in this  
category?

Lack of Pool

Lack of Systems  
to Onboard New  
Members

Step 4: Assets  
offered &  
needed

?

?

?

?



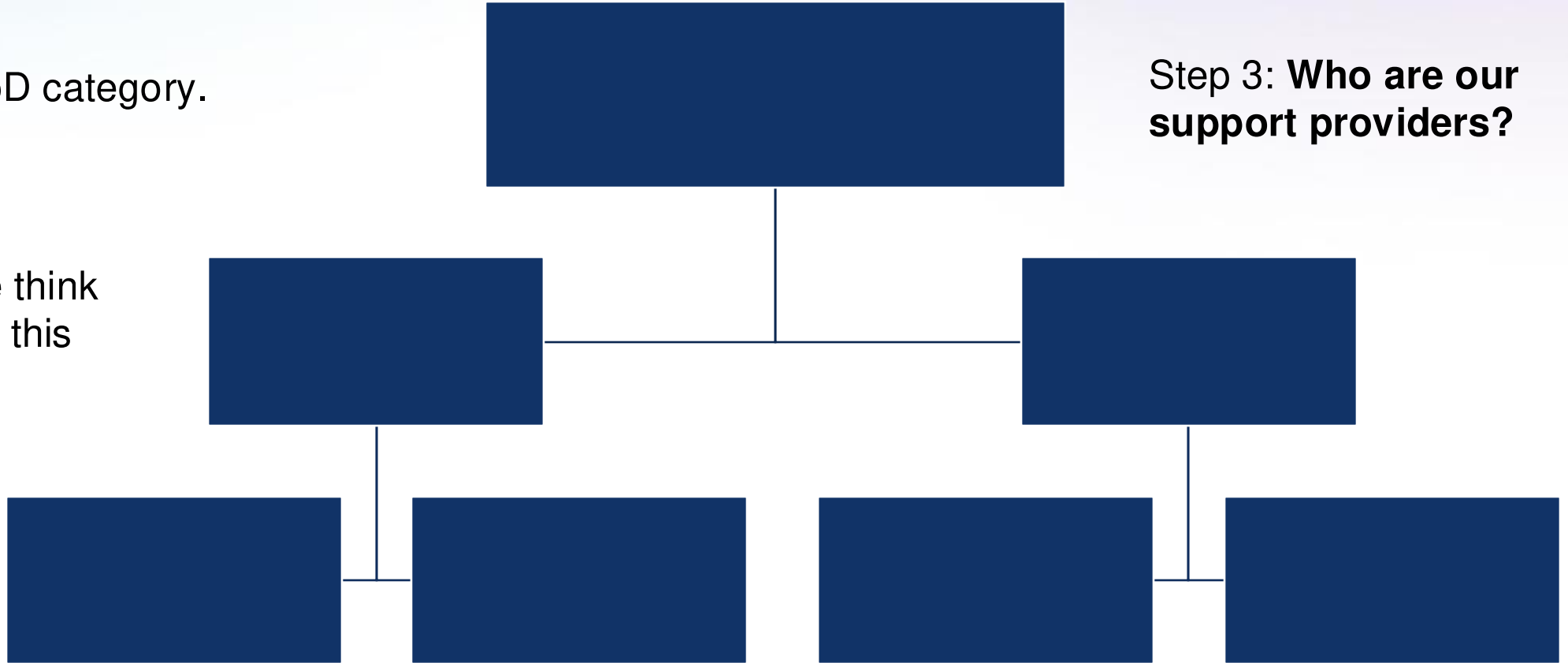
# Your Turn! Aligning Assets to Need

Step 1: Pick one IoD category.

Step 2: Why do we think schools struggle in this category?

Step 4: Assets offered & needed

Step 3: Who are our support providers?





# Whole Group Share

- **What did this bring up for you?**
- What is available to support our schools? How can we better connect struggling schools to existing resources?
- What gaps exist in our current ecosystem of support?

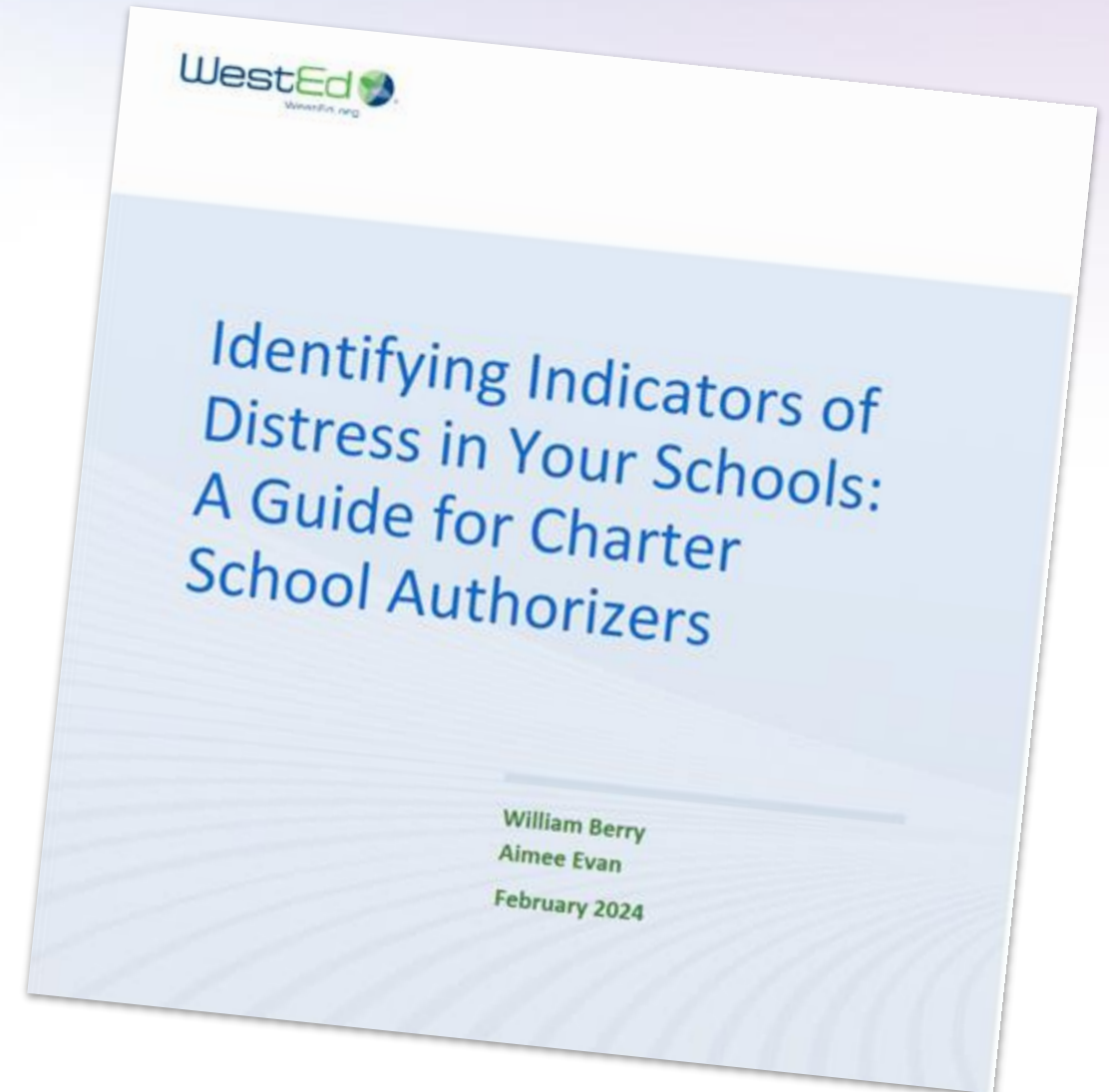


# Want to identify indicators in your own portfolio?

Access the self-paced modules and workbook on Charter Network!

Learn to:

- **Identify** whether and where your **schools are struggling** prior to comprehensive decline;
- **Differentiate sector-wide challenges** and **challenges specific to individual schools**; and
- **Identify strengths** and **areas needed** to address within schools and across your portfolio.

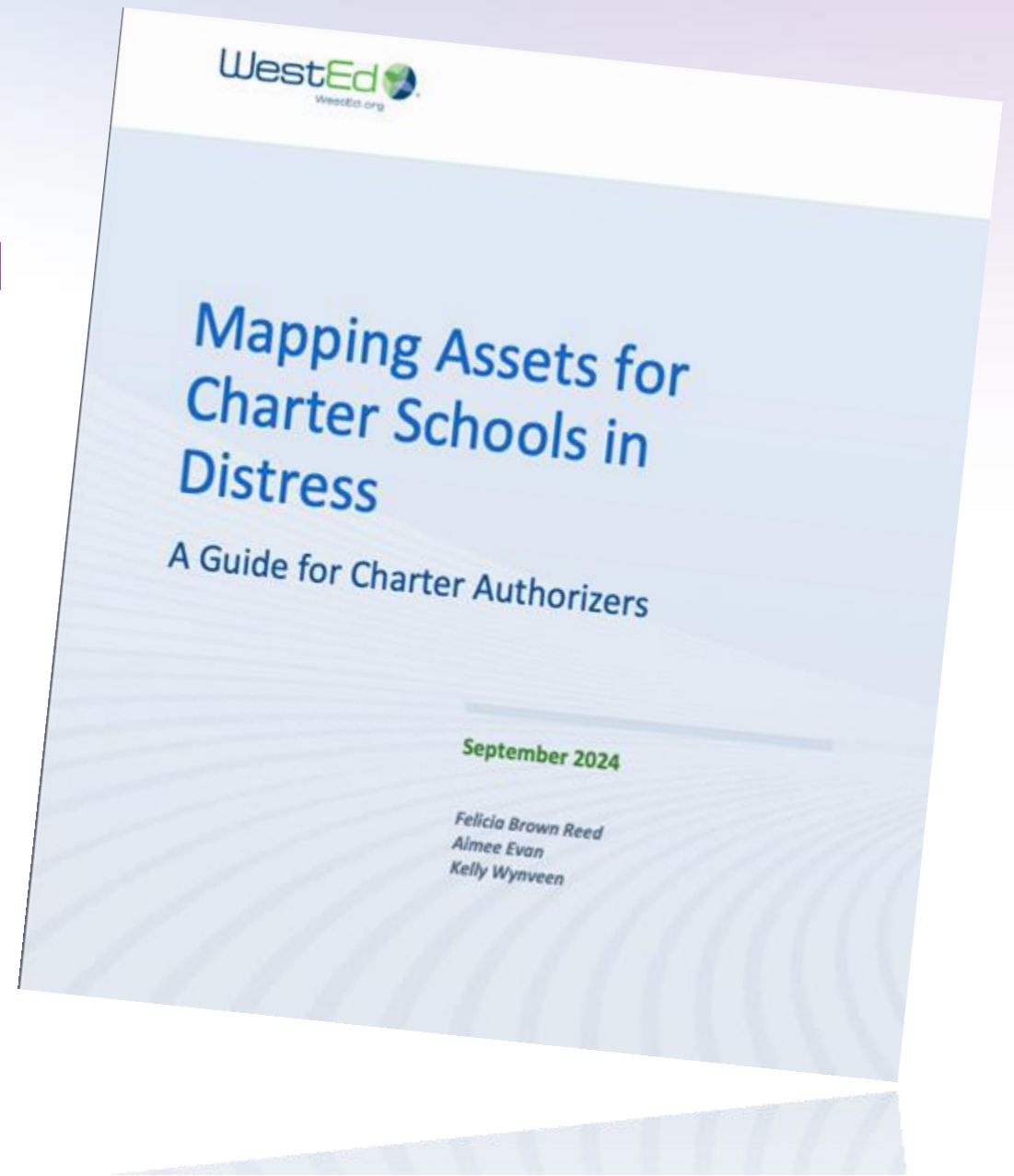


# Need more Info on Asset Mapping?

Self-paced modules and supplemental workbook on charter network

Learn to:

- **Prioritize challenges** that schools face;
- **Examine the depth and breadth of assets** available to charter schools; and
- **Determine how to improve access and alignment** to targeted assets







The 2025 A-GAME Convenings promise to be a hub of connection, learning and innovation. Join us as we host workshops showcasing Responsive Goals and Asset Mapping.

Join the A-GAME Community today and start networking with your peers!

**[CharterNetwork.org/AGAME](https://CharterNetwork.org/AGAME)**

# 2025 A-GAME Convenings

View all events at **[CharterInstitute.org/Events](https://CharterInstitute.org/Events)**



## Virtual Convening 2

Meet with your peers online, Tuesday,  
**March 18, 2025 at 1:00 pm EST.**

## Save the Date:

**MAY  
12-15**

## In-Person Convening

Join your peers in **Atlanta, GA**,  
Monday-Thursday, **May 12-15, 2025.**

**Join Us in  
Atlanta, GA,  
May 12-15!**

**Register Today**



# **MOSAIC OF SUCCESS**

**PIECING TOGETHER WHAT MATTERS**

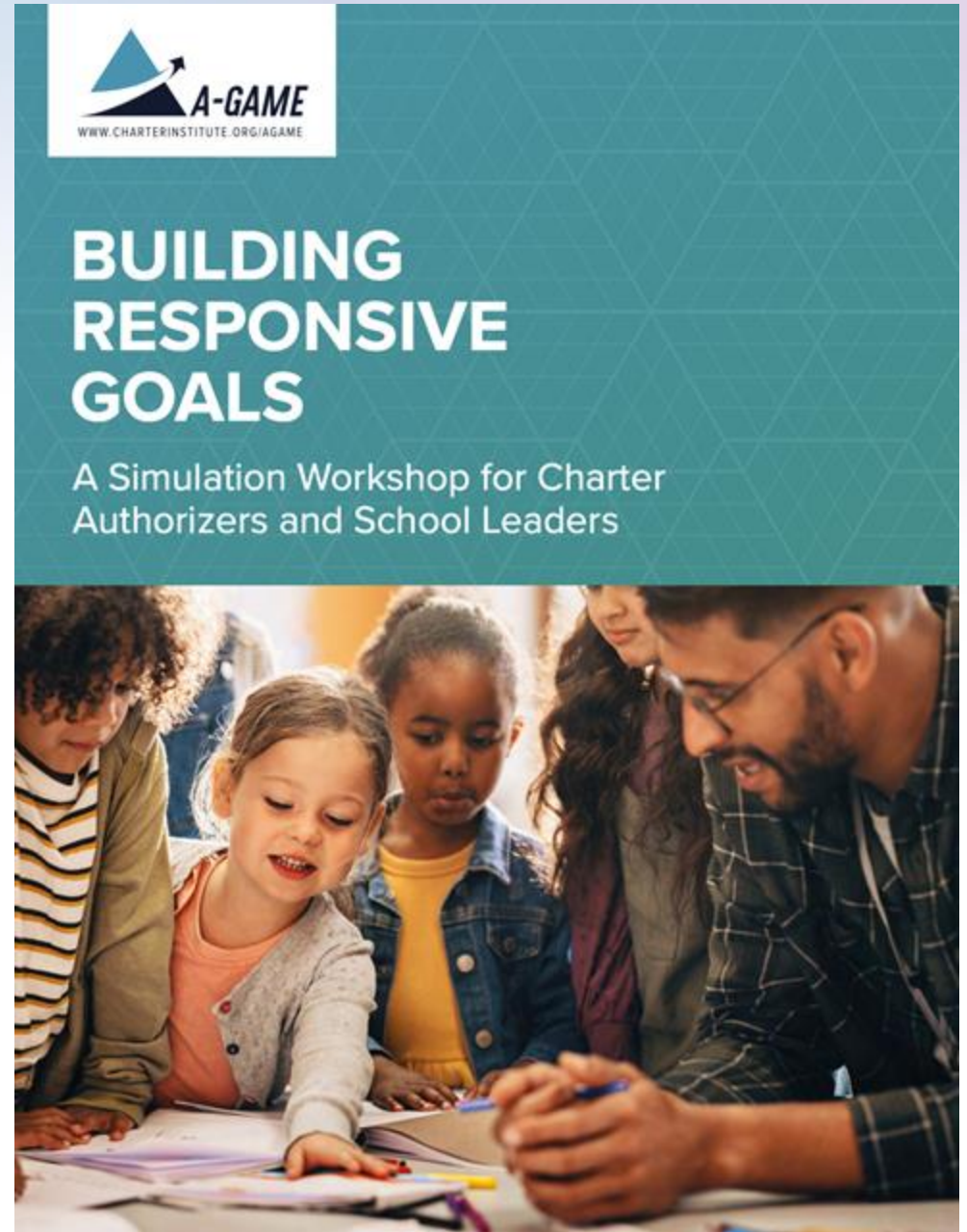
**MAY 12-15, 2025**



# March Workshop: Building Responsive Goals

A Simulation Workshop for Charter  
Authorizers and School Leaders

**Virtual Convening, Part 2**  
**March 18 | 1:00 - 2:00 PM ET**





# Thank You!

Please contact us with any questions.



**Vashaunta Harris**  
VP of Professional Networks  
vharris@charterinstitute.org



**Jody Ernst, Ph.D.**  
Vice President, Research  
jernst@momentum-sr.org



**Aimee Evan, Ph.D.**  
Senior Research Associate  
aevan@wested.org



[WWW.CHARTERINSTITUTE.ORG/AGAME](http://WWW.CHARTERINSTITUTE.ORG/AGAME)